

Best in Show



Winner: Xiu Luo Sun

“Sunset shines on Abbotsford Point”

An amazing example of how light can transform a somewhat mundane scene into something sublime. The artist’s ability to capture the scene speaks to a deep understanding of light temperature relationships and a sensitivity to the subtleties of warm and cool light that play out in a scene like this. A strong composition makes expert use of light and shadow, focusing the viewer’s eye right where the artist wants, anchored by the juxtaposition of the lightest light against the darkest dark. An amazing piece that radiates light and is a pleasure to behold.

Section 1: Traditional

Winner: Margaret Mills “Coastal rockpool”

A beautiful sense of depth, light, movement and lost and found edges. The composition keeps the eye wandering without ever getting lost.

VHC: Davis Lake “Ebb tide, Long Reef”

Expert handling of light, strong foreground composition to lead in and hold the viewer’s attention on a commanding focal point.

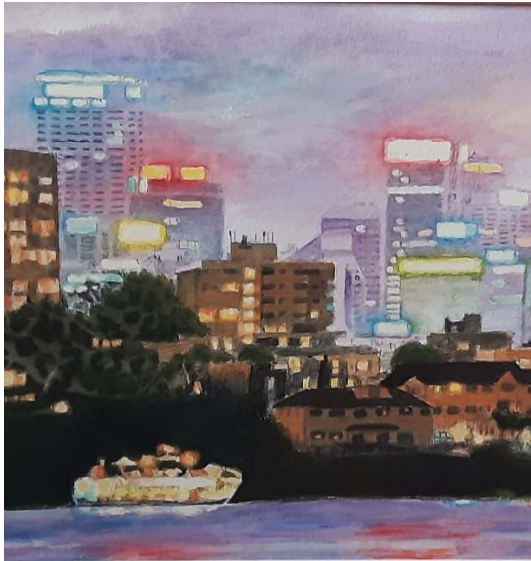


HC: Neil Hetherington “Winter’s day, Sofala”

Great depiction of light temperature relationships on an overcast day. Beautiful edgework supporting a strong composition.

C: Luke Grundoff “Monia”

Beautiful gestural study. Strong economic brushwork keeps it fresh and vibrant.



Section 2: Watercolour, including opaque

Winner: Dane Ikin "Northern Sydney by night"

An incredible understanding and handling of tonal value. This painting simply glows! A strong composition keeps the viewer constantly engaged.

VHC: Narelle Scott "Hiding in plain sight"

A complex vignette, distilled into an engaging composition that captures the viewer's eye. The more you look, the more you see.

HC: Corinne Gaston "Rivendell gate House"

A beautiful little study. The application of colour and simplified line work gives the piece a sense of immediacy: a quick moment captured in time.

C: Peter Fairfax "Hawti"

Lovely gestural composition supported by strong handling of figurative proportion. The subject captures the viewer's eye, demanding attention.

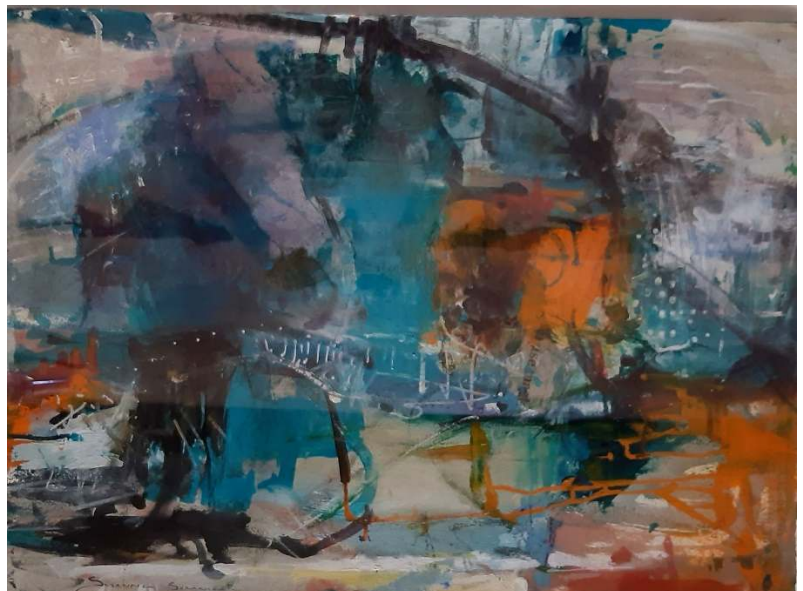
Section 3: Modern

Winner: Suzanne Sommer "By the way"

A dynamic composition that creates a strong sense of movement, supported by well placed tonal and colour variations.

VHC: Felicia Finlayson "Moving beyond reflection as I climb"

A sense of upward and circular movement allows the viewer to participate in the "climb" of the piece's title. The painting compels you to interact with it>



HC: Patrice Wills "Wanting time to stop"

A balanced blend of the figurative and abstraction. The ambiguity of the title compliments the visual mystique of the painting.

C: Barbara Aroney "Late afternoon sun"

Well placed colour and abstracted composition create a perfect sense of afternoon sun on bushland vegetation.



Section 4: Fine Art Prints

Winner: Robert Enemark "Gnarled tree trunks, West McDonnell Ranges"

A strong handling of value creates a wonderful sense of light, anchored by the bold design of the primary motif.

VHC: Karen Greenwood "Silo"

A strong and simplified line work coupled with suggested forced perspective and solid composition creates upward movement and the looming of a towering silo.

HC: Margaret Vickers "Animal meanderings"

Nice horizontal movement, accentuated by the designs and band of pigment, which bring the background to life. It brings to mind insect tracks on gum trees and seeping sap. This piece is alive.

C: Eva Barry "Hope"

A simple yet bold little statement, supported by a strong design.

Section 5: Drawing

Winner: Anna Warren "Connections"

A freeform wonder of abstract expression. The designs appear to shapeshift before your eyes, always keeping the eye engaged and looking for shapes that remind you of something familiar.

VHC: John Perkins "Steel works, Port Kembla"

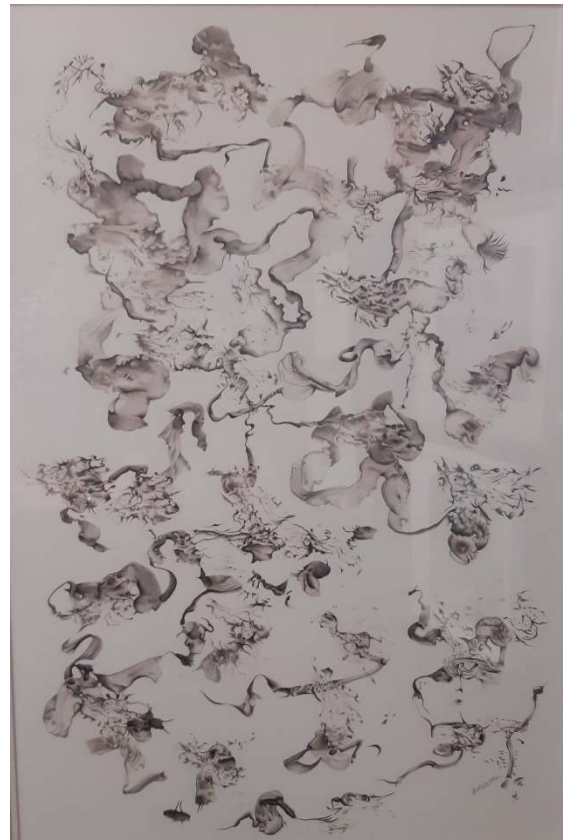
A bold tonal composition with strong leading lines directing the eye upward to a stark focal point, counter changed against the sun breaking through the clouds. The aerial perspective is expertly handled.

HC: Khing Sin McCotter "Towards Greenwich Point"

Wonderful use of edges, value and colour that all serve in support of the piece's focal point.

C: Phillip Kent "Rivendell, across the river"

A beautiful sketch that retains its sense of immediacy while still expertly handling the precision of architectural complexity.





Section 6: Portrait

Winner: Xavier Ghazi "Nick"

Incredible handling of form, edges, value and draftsmanship. A fresh and compelling portrait that conveys a deep understanding of the subject matter.

VHC: Susheela Giri "Village Chief"

Confident handling of the watercolour medium to depict a striking portrait with a piercing gaze. Strong understanding and representation of form, value and colour harmony.

HC: Patrice Wills "Another year around the sun"

Beautiful use of negative space to create a thoughtful and pensive mood and to draw the eye into the focal point.

C: Robyn Ross "Peace again?"

Strong draftsmanship and a simple, direct composition keep the viewer engaged, entranced by the piercing gaze of the painting main subject.

Section 7: DAS Members only

Winner: Jean Murray "Lady Huntingdon II"

A delicate and compelling depiction of the subject matter. A wonderful understanding of light imbues the painting with a warm sense of life and movement.

VHC: John Perkins "Lachlan River evening"

Expert handling of a restrained value range and colour temperature relationships.

HC: Neville Cannon "Old cottage, Hartley NSW"

A lovely little painting supported by a strong composition and handling of values.

C: Eva Barry "Dying trees, Eden"

A wonderful sense of movement, anchored by a strong central tree motif. The limited colour palette creates the stark, sombre atmosphere of the piece's title.





Section 8: Small Works

Winner: Robyn Berling “Golden afternoon”

A beautiful little imagined landscape that glows with life. It brings to mind a feeling reminiscent of Japanese gold leaf woodblock prints.

VHC: Gede Austana “Woman with aura”

Strong contemporary design. Lovely graphic line work and vibrant sense of colour.

HC: Felicia Finlayson “Approaching evening”

Layered textures and complimentary colours, combined with a composition supported by a strong value structure creates a sense of mystery and quiet associated with the approach of evening.

C: Dana Sypniewski “At the beach”

A beautifully captured impression of light. Lovely sense of movement.

*Thank you to all artists for your wonderful works which make up yet another wonderful exhibition.
Drummoyne Art Society can be proud of its continued high standard and variety of works.*

Thank you also to our judge, Dario Falzon who took the time to make certain of his deliberations.